

CELL :- Tensioner | CELL NAME:- Tensioner | MACHINE / STAGE :- SPM | OPERATION :- facing & Tapping

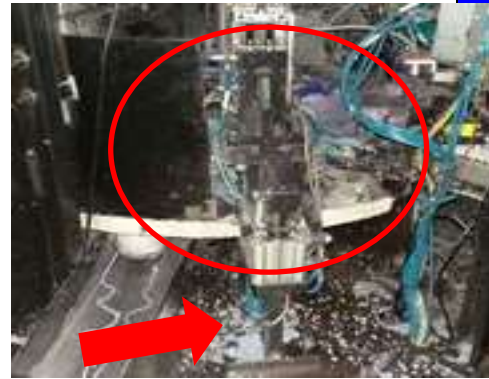
**KAIZEN THEME :-**To Reduce SOC.

**IDEA :-** Guard available.

**WIDELY/DEEPLY:-**

**COUNTERMEASURE:-** Now we provide guard On the m/c.

**PROBLEM / PRESENT STATUS :-**Chips fall on shop floor from SPM m/c.



**BEFORE**



**AFTER**

<b>BENCHMARK</b>	100%
<b>TARGET</b>	10%
<b>KAIZEN START</b>	03.08.2017
<b>KAIZEN FINISH</b>	30.08.2017

**TEAM MEMBERS :-**  
Amit Singh

- BENEFITS :-**
- SOC reduced
  - Minor stoppage reduced.
  - Cleaning time reduced.
  - Moral improve.

**KAIZEN SUSTENANCE**

**WHY - WHY ANALYSIS :-**

**WHY1 :-**Chips fall on shop floor from SPM m/c.  
**ANS 2:-** Guard not available.

**RESULT :-**Eliminated chips falling on shop floor

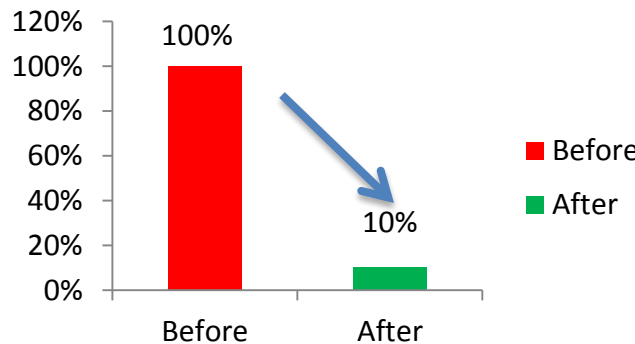
**WHAT TO DO :-** IR- reversible

**HOW TO DO :-** N/A

**FREQUENCY :-** one time activity.

**ROOT CAUSE :-**Guard not available.

**Chips fall on shop floor in %**



**COST INCURRED FOR MAKING KAIZEN**

MATERIAL COST RS.	LABOUR COST RS.	TOTAL COST RS.

**SCOPE & PLAN FOR HORIZONTAL DEPLOYMENT**

SR. NO.	CELL	TARGET	RESPONSIBILITY	STATUS
1				

**REGISTRATION NO&DATE:**

**REGISTERED BY :-**

**MANAGER'S SIGN :-**